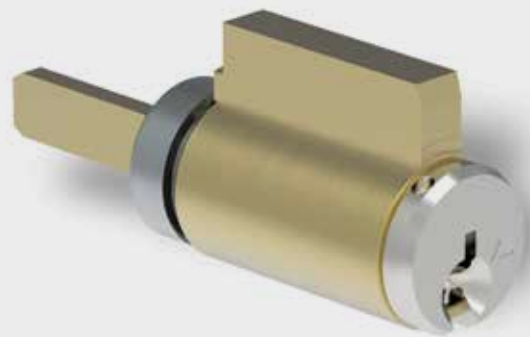


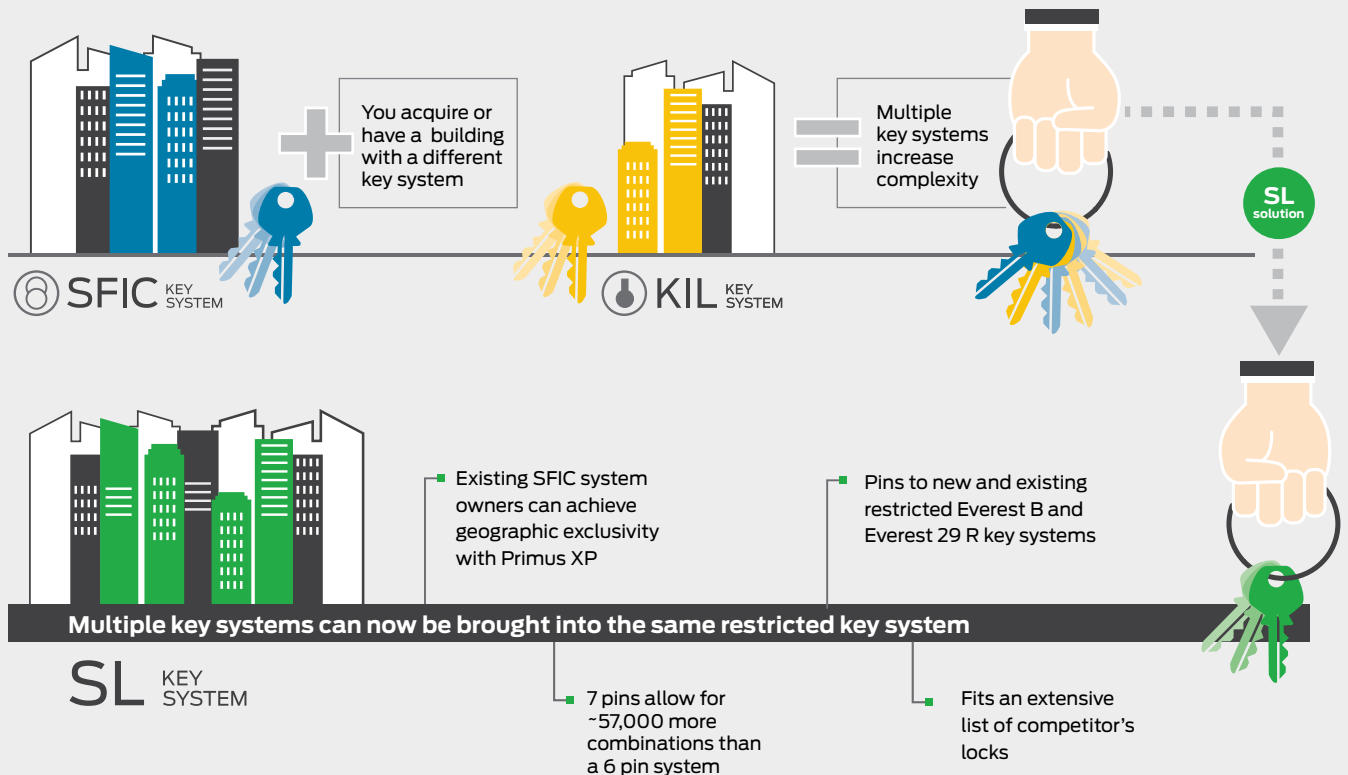
SCHLAGE

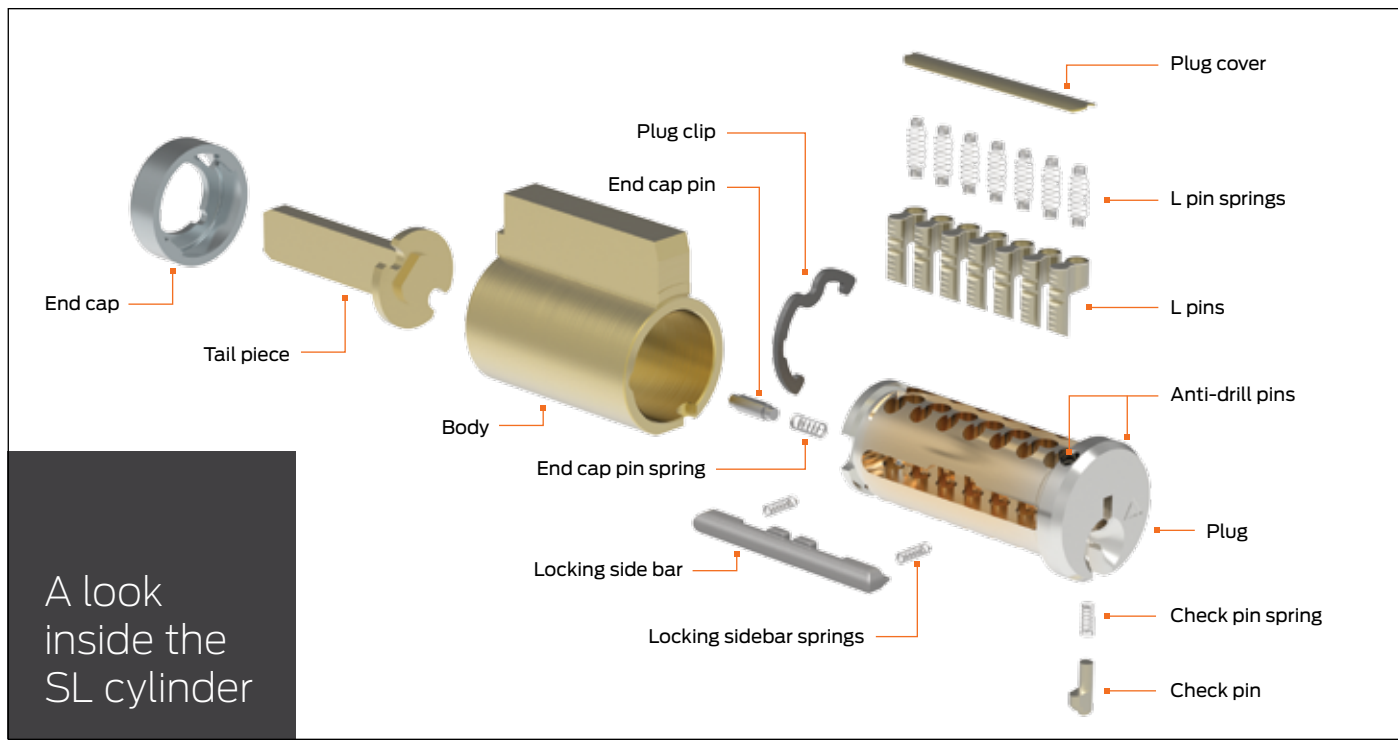
Everest 29™ SL

7 pin full size cylinder



The Everest 29™ SL cylinder provides users capabilities never before offered by Schlage. The SL cylinder accepts a Small Format Interchangeable Core (SFIC) A2 key system in a full size key in lever (KIL) cylinder. Buildings on multiple key systems can now be brought into the same restricted key system at a much lower cost than replacing installed cylindrical lock hardware.





Additional security gained with Primus® XP

	Everest 29 SL	Everest 29 SL Primus XP
Patented until 2029	■	■
Check pin	■	—
Utilizes 2 sidebars	—	■
Maximum key duplication restrictions	—	■
Uses pin kit # 40-247	■	■
Level 9 geographic exclusivity	—	■
7 pins	■	■
Electronic validation available	■	■

Finish options

Color	605 Bright brass	606 Satin brass	609 Antique brass	612 Satin bronze	613 Oil rubbed bronze	619 Satin nickel	625 Bright chrome	626 Satin chrome	626AM Satin chrome	629 Bright stainless steel	630/ 630AM Satin stainless steel	643 Aged bronze
KIL	—	■	—	—	—	—	—	■	—	—	—	—
Mortise and RIM	■	■	■	■	■	■	■	■	■	■	■	■

Allegion, the Allegion logo, Everest 29, Primus, Schlage, and the Schlage logo are trademarks of Allegion plc, its subsidiaries and/or affiliates in the United States and other countries. All other trademarks are the property of their respective owners.

About Allegion

Allegion (NYSE: ALLE) is a global pioneer in safety and security, with leading brands like CISA®, Interflex®, LCN®, Schlage®, SimonsVoss® and Von Duprin®. Focusing on security around the door and adjacent areas, Allegion produces a range of solutions for homes, businesses, schools and other institutions. Allegion is a \$2 billion company, with products sold in almost 130 countries. For more, visit www.allegion.com.

