

SARGENT & GREENLEAF, INC.

1 SECURITY DRIVE • NICHOLASVILLE, KENTUCKY 40356

TELEPHONE: (606) 885-9411

TELEX: 21-8459



Key Op Models: 6804 and 6824

Operating Instructions

PERFORM CHANGE FUNCTION

STEP 1 Insert key- Rotate clockwise

STEP 2 Loosen fence clamp screw (on back of lock) with change wrench-4 turns counterclockwise.

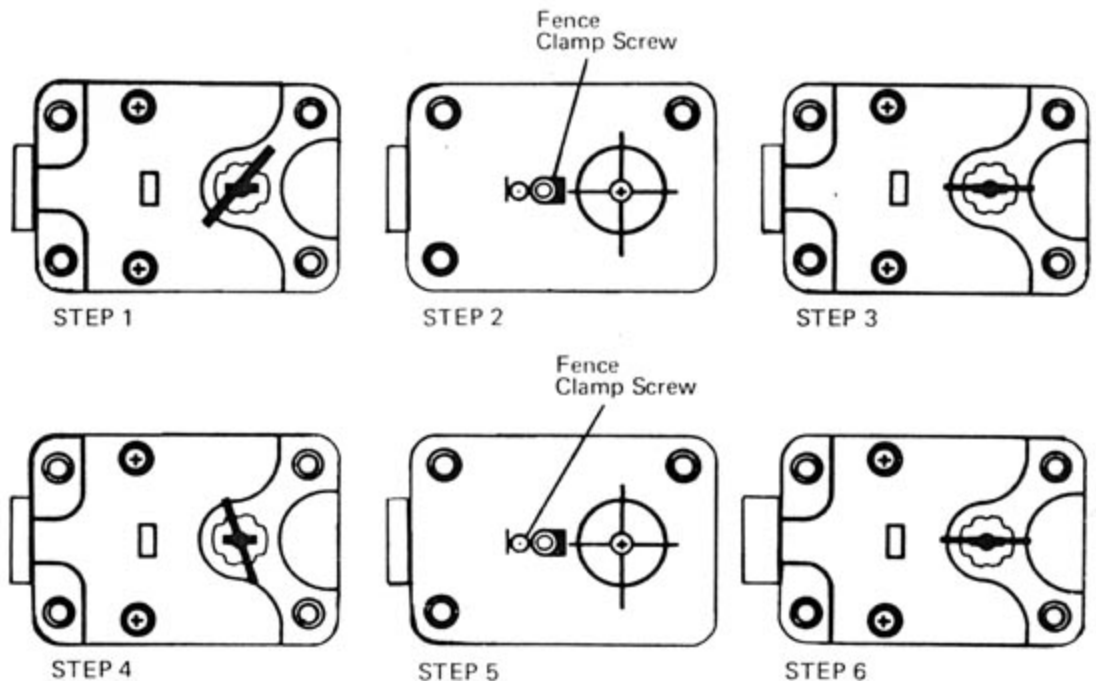
STEP 3 Rotate key clockwise to change slot position remove key.

STEP 4 Insert new key- Rotate counterclockwise until stop
Caution: Make sure key does not move from stop position while tightening clamp screw.

STEP 5 Tighten fence clamp screw clockwise.

STEP 6 Rotate key counterclockwise to lock.

STEP 7 Test lock.



The Key operated safe lock; Key Op from Sargent & Greenleaf is another of a family of fine lock products designed to add value and convenience.

The lock is changeable which means you can change it to take different keys ... whenever you want to "re-key" the lock. All you need is the Allen wrench and a new key.

The lock is as secure as those found in safe depositories and has earned the UL label and certification.

The lock is Sargent & Greenleaf's answer to the changing security and convenience needs of today's world. It offers far better security than a mere pin tumbler lock often used in these applications ... in fact, it offers as much resistance to a skilled manipulator as a good UL Group 2 combination lock. Key Op does all this at a cost you can afford. It is at the same time extremely rugged and simple. You've purchased

a trouble free and easy to use lock which is one of the latest from a long line that have been produced for over a century and a quarter by Sargent & Greenleaf.

To set your Key Op to a new key, follow these directions.