

# LSA REPORTER

Executive Editor—Sal Dulcamaro, CML

Associate Editor—William M. Lynk, CRL \* Associate Editor—Alvin Moebus

**Publication Deadline:** Submit items Two (2) Weeks (14 calendar days) prior to the LSA meeting date.

**LSA Website:** <http://home.earthlink.net/~lsamichigan> (case sensitive)



## PRESIDENT'S MESSAGE—MAURICE HORNE, CML

Last month Mel Smith from Hardware Agents gave an excellent presentation on Detex and PDQ Hardware.

Jerry Roraback from LAB will be our speaker for the month of November so I hope that everyone can make it to the meeting. I don't know what the door prize will be but your dues must be paid up in order to win one. We had two winners at the last meeting, so come out and claim your prize. A Large Format IC Class will be held on November 12 and a PRP test on that section will be given after the test. To register see Bob Noble, CML. December will soon be here and we hope to have a holiday dinner during that meeting, so if you want to be part of the planning process, then you should attend this November meeting. LSA has a lot to offer in education, training, and opportunity, so I hope that everyone is taking advantage of this. I would love to see our membership grow, so lets be a part of this growth and invite someone to our next meeting. See you at the meeting. -Maurice Horne, CML



## LSA INFORMER—HOT NEWS FOR YOUR INFORMATION

[The secret **LSA Informer** is a part of a national group known as the: *Top Secret Government Undercover Lock/Security Initiative Act* that took effect 1.7 years ago. This information, though classified, is being released for *Your-Eyes-Only*].....lotza cool stuff is goin' on with LSA.....the website is dynamite, but speaking of explosions, **Caesar** pooped on the bedroom floor the next morning when he was **OVERFED** treats at the last LSA meeting. This was a confirmed by a trusted source. No locksmith will be named (**John Hubel**), but we are sure it was a cycle of the moon that caused such an unusual activity that has **NEVER** occurred before in the dawgs 3.5 year life-span.....speaking of life spans, what is new is often good...just talk to **John McElreath** who attended the last meeting. His cool lock shop is in Bellville and he's just getting started...good luck.....but there's no "getting started with **Mike Wisniewski** who displayed to us at the last LSA meeting the most excellent illuminated goggles for only \$2.00. I have to have him shop for me at Christmas. Gotta run now, some locksmith is waving his key blank over his head.....key rage???? Please send me hot news at [lsamichigan@earthlink.net](mailto:lsamichigan@earthlink.net) Gotta have it!!! See ya next time—



## INDUSTRY NEWS & ISSUES

**LSA Offers Worldwide Internet Exposure for Members!** Yes, that's right. Even the smallest locksmith business can gain internet "equality" on our site. Just request by e-mail the **LSA Internet Locksmith!!! Form** and it will be e-mailed to you. Your listing will appear as seen when you click on the side tab **Locksmiths!!!** As a paid member of LSA, your services will be noticed by many....free.

**ALOA Open House**—ALOA's new headquarters are ready to view. Open House is November 18th, 10—4 p.m. You Goin'?

**Discovery Channel**—Here they are busting "Lock Myths". Bob Stafford, CML was contacted at ALOA for information. Check local listings—Wednesday's at 9:00 p.m. ET/PT on the Discovery Channel.

**LAB & Jerry**—No, not "Tom & Jerry", but a generous, top-notch Executive VP [**Jerry Roraback**] from the most prestigious pin manufacturer in the world will be visiting LSA at our November meeting. Be there, or be square (unlike any LAB pins).



## EDUCATION & PRP NEWS—*ROBERT NOBLE, CML*

“Exciting” was our buzz word for last month but with everything happening we can only continue to be excited about LSA. **JERRY RORABACK**, executive vice president of LAB Manufacturing will be joining LSA at the November meeting. We need to give **GENE SIMON**, LAB factory representative, a resounding thank you for his help in getting Jerry scheduled for Detroit.

**WILLIAM LYNK**, renowned author, will be sharing his knowledge of Large Format IC with students November 12, at the Holiday Inn Express in Roseville. Check this newsletter for a copy of the class flyer. Call now to make your reservation for this valuable class.

Be sure to keep the LSA calendar handy: We have interesting speakers lined up for December, January and February. We are looking forward to another class in January or February, A full PRP sitting in February or March and the last class of the season in May. As dates and subjects are confirmed, we will publish an updated calendar.

I have said it in the past and you will probably hear me say it again: Education does not cost, it pays. **Invest in yourself, invest in your education, invest in your future.**

See you at the meeting and at the class.

**Robert Noble, CML**—Education Chairman

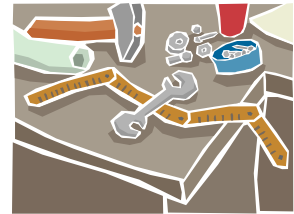
## NEXT LSA MEETING

THURSDAY,  
DECEMBER 8TH  
AT 7:30 P.M.



## TECH TIPS—BY AARON RODGERS

A piece of rubber floor runner or rubber base board found at most ACE-like stores can be cut into several pieces to provide a roll resistant work surface. It is typically bought by the foot. Carpet scraps cut to size can also provide the same function.



## PRP GLOSSARY—KEEPING YOU “IN THE KNOW”

*crane hinge* (n) - a three leaf hinge assembly with two of the leaves being mounted to the body and door and the third only to the other two leaves

*fireman's key* (n) - a key used to override normal operation of elevators, bringing them to the ground floor



## LSA OFFICERS

### ELECTED OFFICERS:

President—**Maurice Horne, CML** (313) 550-5810    Treasurer—**Larry Walker, CRL** (313) 350-1641  
Vice President—**Michael Buda** (313) 730-1075    Secretary—**Elmer Carver** (313) 493-0117

### APPOINTED OFFICES:

Education Chairman—**Robert Noble, CML** (810) 385-9329  
Membership Chairman/Newsletter Executive Editor—**Sal Dulcamaro, CML** (586) 791-5416  
Membership Secretary—**Alvin Moebus** (313) 885-9365  
Ombudsman—**Elmer Carver** (313) 493-0117  
Newsletter Associate Editor—**William M. Lynk, CRL** (313) 884-9800  
Newsletter Associate Editor—**Alvin Moebus** (313) 885-9365  
Sargent-At-Arms—**John Bradford**  
Webmaster—**William M. Lynk, CRL** (313) 884-9800

**Locksmith Security Association** meets at 7:30 p.m., the second Thursday of the month (Sept. to June) in the Metro Detroit Area in southeast Michigan.

UAW Hall  
1640 Stephenson Hwy.,  
just north of Maple (15 Mile Rd.),  
on the east side of street

We're On the Web! [Case-SeNsItIvE!] <http://home.earthlink.net/~lsamichigan>

**LSA MEMBER OF THE MONTH—LEON MILLER**



**T**his month we introduce to you Leon Miller. After 35 years working for Buick division

of GM, Leon Miller retired. He made doors as his vocation, tinkered with locks on the many of the doors he made, and decided to get into the trade. At the urging of Maurice Horn Leon joined L.S.A. September of 2005. He is currently doing only residential, but hopes to branch out to other areas. This

past year Mr. Miller has taken three classes sponsored by our Association. He stated he will continue taking classes and he would really appreciate any help from the membership in the way of techniques, tips-of-the-trade, and other nuggets of knowledge. Leon and his family are currently residences of Flint, Michigan.

- Newsletter Staff



**“Qwik-Qwiz”**

**Q)** In Ford products using the 10 cut system, how many cuts on the key are common to both the door & ignition cylinders?

- A) 2
- B) 4
- C) 6
- D) 10
- E) none

[answer on next page]

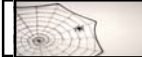
**IC CORNER—WILLIAM M. LYNK, CRL**

**“THE MYSTERIOUS DOMINION REMOVABLE CORE”**

How apropos that we reach the Autumn-Halloween time of year to introduce to LSA Members the little-known **Dominion Large Format Removable Core (RC)**, still today shrouded in mystery. It is not unlike the old Sargent 5100 Series R-Core in basic concept. In both situations there exists a rear mechanism that acts as a "control area." In the Dominion core (a six-chamber core), there is a control ring in the last chamber that has a *control lug* attached to it. This lug, when in its relaxed state (extended), keeps the core within its housing. When the control key activates the control ring, the lug turns to the left (counterclockwise) and recesses into the core assembly, allowing the R-core to be removed from its housing. Within the Dominion core, the sixth chamber can also be used for operating key bittings. This is not the case with the Sargent 5100 Series core. As you may presume, bittings are then limited and care must be taken when combining the control chamber.



More on this topic can be read in the October 2005 issue of ALOA Keynotes.



**WEB LINKS**

**ALOA**

[www.aloa.org](http://www.aloa.org)

**The Lockwriter**

<http://home.earthlink.net/~lockwriter>

**ClearStar Security Network**

[www.clearstar.com](http://www.clearstar.com)

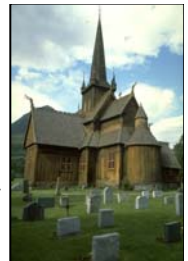
**LAB**

[www.labpins.com](http://www.labpins.com)

**DID YOU KNOW....**

.....A TOMBSTONE IN A NEW ENGLAND CEMETERY READS:

*“AN ANCIENT LOCKSMITH DIED OF LATE, AND DID ARRIVE AT HEAVEN’S GATE; HE STOOD WITHOUT, AND WOULDN’T KNOCK, BECAUSE HE MEANT TO PICK THAT LOCK.”*



**CALENDAR OF LSA EVENTS—SEE WEBSITE FOR COMPREHENSIVE LIST**

November 10, 2005—Meeting: 7:30 p.m.; **Jerry Roraback** from LAB

November 12, 2005—A.C.E. LFIC Class—8:00a.m. to 5:00 p.m.; Instructor **William Lynk, CRL;**  
**(ALOA MEMBERS ONLY - PRP Elective P-L-39 AFTER Class)**

December 8, 2005—Meeting 7:30pm; ?Holiday Dinner? 6:30 p.m. if association wishes;  
Speaker: **John Hohausner**, Oberting & Associates—RCI  
Speaker: **Rod Lincoln**, Lincoln Sales—E-Plex Locks

January 12, 2006—Meeting: 7:30 p.m.; **John Bockert**, Bockert & Associates

→For those who live far: Saginaw, Gaylord or even Saugatuck!!!!, your time attending our meetings is well spent.  
Let us know how we can help you be a better locksmith professional.

“Education, Knowledge & Cooperation—LSA”



**Caesar**—Kicking back after a hard day of sorting key blanks in the lock shop.  
-LSA Mascot



**LOCKSMITH SECURITY  
ASSOCIATION  
OF MICHIGAN**

533 Fisher Road  
Grosse Pointe, MI 48230

Phone: (313) 885-9365

Email:  
lsamichigan@earthlink.net

**Bookmark the LSA Website. It might  
be 'tuff at first, but then it's a breeze!  
<http://home.earthlink.net/~lsamichigan>**

**CLASSIFIED ADS—SEE LSA WEBSITE FOR UPDATES**

For Sale:

**Robert Noble has a number of Depth and Space Key sets  
available for sale. He has KW1, SC4, Mi, M2, N14, AM6,  
H50, H60 and others. He will have all the sets at the No-  
vember meeting. Take all thirteen sets and get special pric-  
ing. See Bob at the meeting.**

*Free: LSA always has free items for members who attend the meetings!*

Qwik-Qwiz: Answer Two cuts are common, so the answer is A.

**Associate Members of LSA**

**Bockert & Associates**

18 Fort Monroe Industrial Parkway  
Monroeville, OH 44847

**(800) 321-7550**

FAX: (419) 465-4216

**Manufacturer Reps for:**

ABUS, ARROW, ASSA, DON JO,  
H.E.S., HPC, LOCKCRAFT,  
CANSEC, SECURITRON, CBC,  
MERIT, TAKEX, MEDECO

**IDN-Hardware Sales, Inc.**

35950 Industrial Road  
P.O. Box 510624  
Livonia, MI 48150

**Livonia: (800) 521-0955**

FAX: (800) 272-4409

**Warren: (800) 468-7490**

FAX: (586) 755-5145

*Your Key to Security Hardware*

**ICLS**

*Interchangeable Core  
Lock Systems*

**William M. Lynk, CRL**

*IC Specialist/IC Author  
ALOA, ASIS, LA, LSA, ClearSer  
Certified ALOA, A.C.E. Instructor*

♦ IC Products ♦ IC Tools  
♦ Dist. For Xpernetix/Ultra Security

Phone: (313) 884-9800

E-mail: [icls@earthlink.net](mailto:icls@earthlink.net)

Web: <http://home.earthlink.net/~icls>

**LAB**

**THE CHOICE OF**

\*Professional Locksmiths  
\*Finest Lock Companies

700 Emmett St.  
Bristol, CT 06010

**(800) 243-8242**

FAX: (860) 583-7838

**JLM Wholesale, Inc.**

3095 Mullins Ct.  
Oxford, MI 48371

**(800) 522-2940**

FAX: (800) 782-1160

*Wholesale Hardware*

**RITTMER/FRENCH  
ASSOCIATES**

150 S. Elizabeth  
Rochester, MI 48307

**(800) 732-4773**

1-800-RFA-4-SPEC

FAX: (248) 651-2650

**Gene Simon**

**HARDWARE SPECIALIST**

Phone: (708) 799-8783

FAX: (708) 799-4322

P.O. Box 51  
Flossmoor, IL 60422

**Representing:**

Jet Hardware Mfg. Corp.  
LAB Security Products  
Major Manufacturing, Inc.

**Ultra Security /**

**XPERINETIX**

*Manufacturer of Premium  
Interchangeable Core Systems, Innovative  
IC Service Tools  
and Ground-Breaking IC Products*

17560 Matinal Drive  
San Diego, CA 92127-1240  
Phone: (800) 698-7477

[www.UltraSecurityUSA.com](http://www.UltraSecurityUSA.com)

E-mail: [ultrasec@san.rr.com](mailto:ultrasec@san.rr.com)

DISTRIBUTOR: ICLS \* Phone: (313) 884-9800

**THIS AREA  
IS  
AVAILABLE  
FOR  
YOU!**

Be proud of  
your Business.

Our Rates are

**Excellent!**

**Your Company  
Would Look Great  
In This Location**

Let LSA Tell  
**Everyone**  
About Your  
**Superb Business**  
Right Here!